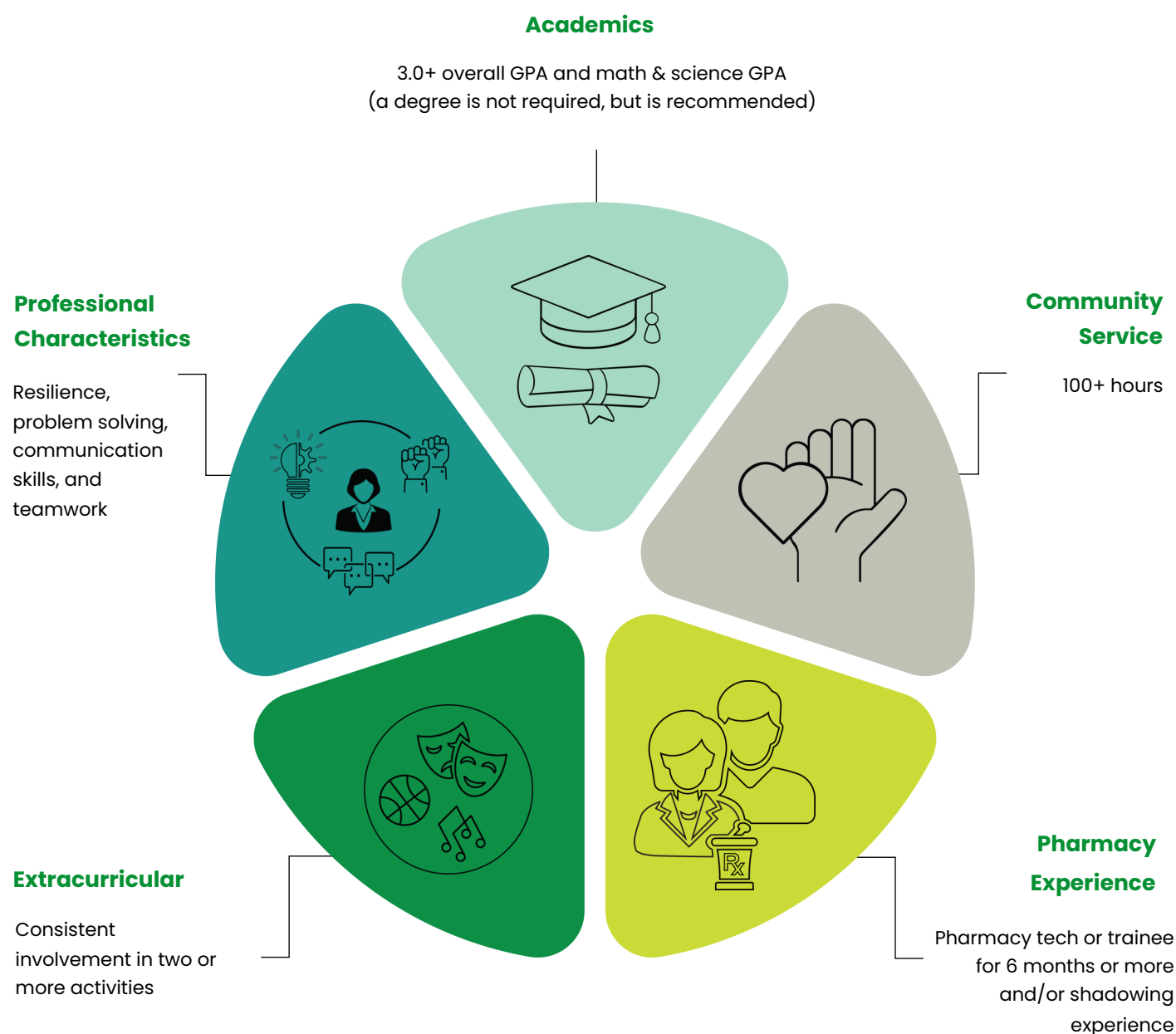


# Pharmacy School Competitive Application



## What is the holistic candidate review?

Texas pharmacy schools use a “holistic candidate review” process to gauge a candidate’s qualifications to enter a Doctor of Pharmacy program. This review looks at the candidate in totality, taking into consideration quality experiences that prepare them to enter the pharmacy profession. The wheel below represents our recommendations for a competitive application.



# Progress Tracking

Name: \_\_\_\_\_

**Evaluation Criteria:**

1 - Fails to Meet Expectations; 2 - Falls Short of Expectations; 3 - Meets Expectations; 4 - Exceeds Expectations; 5 - Outperforms Expectations

ACTIVITIES	1	2	3	4	5
Extracurriculars	<div></div>	<div></div>	<div></div>	<div></div>	<div></div>
GPA	<div></div>	<div></div>	<div></div>	<div></div>	<div></div>
Professional Characteristics	<div></div>	<div></div>	<div></div>	<div></div>	<div></div>
Shadowing/Pharmacy Experience	<div></div>	<div></div>	<div></div>	<div></div>	<div></div>
Volunteering	<div></div>	<div></div>	<div></div>	<div></div>	<div></div>

Comments/Suggestions: