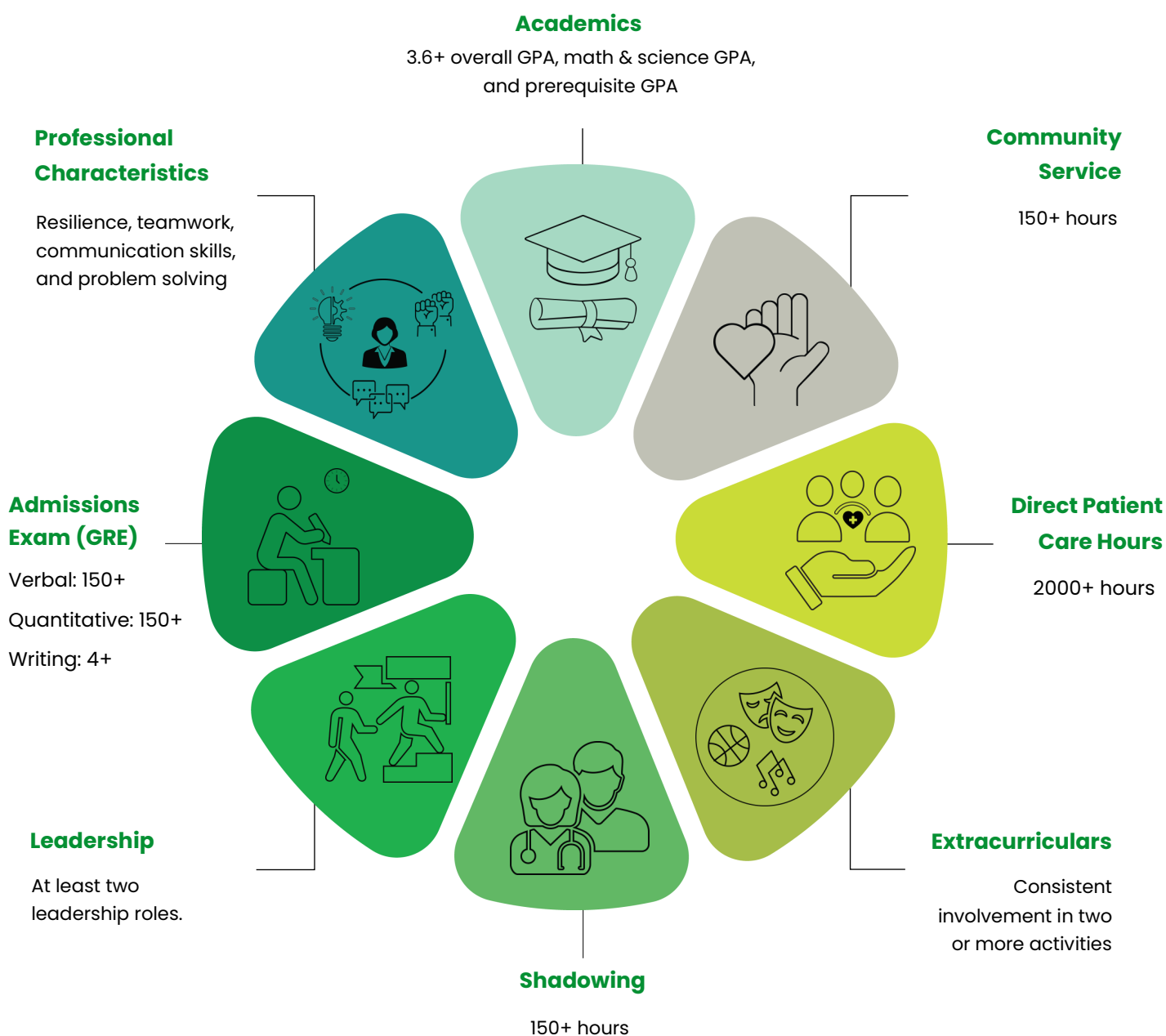


# Physician Assistant School Competitive Application



## What is the holistic candidate review?

Texas physician assistant schools use a “holistic candidate review” process to gauge a candidate’s qualifications for attending a Master of Physician Assistant Studies program. This review looks at the candidate in totality, taking into consideration quality experiences that prepare them for the Physician Assistant profession. The wheel below represents our recommendations for a competitive application.



# Progress Tracking

Name: \_\_\_\_\_

**Evaluation Criteria:**

1 - Fails to Meet Expectations; 2 - Falls Short of Expectations; 3 - Meets Expectations; 4 - Exceeds Expectations; 5 - Outperforms Expectations

ACTIVITIES	1	2	3	4	5
Extracurriculars	<div></div>	<div></div>	<div></div>	<div></div>	<div></div>
GPA	<div></div>	<div></div>	<div></div>	<div></div>	<div></div>
Leadership	<div></div>	<div></div>	<div></div>	<div></div>	<div></div>
Professional Characteristics	<div></div>	<div></div>	<div></div>	<div></div>	<div></div>
Direct Patient Care	<div></div>	<div></div>	<div></div>	<div></div>	<div></div>
Shadowing	<div></div>	<div></div>	<div></div>	<div></div>	<div></div>
Volunteering	<div></div>	<div></div>	<div></div>	<div></div>	<div></div>

Comments/Suggestions: