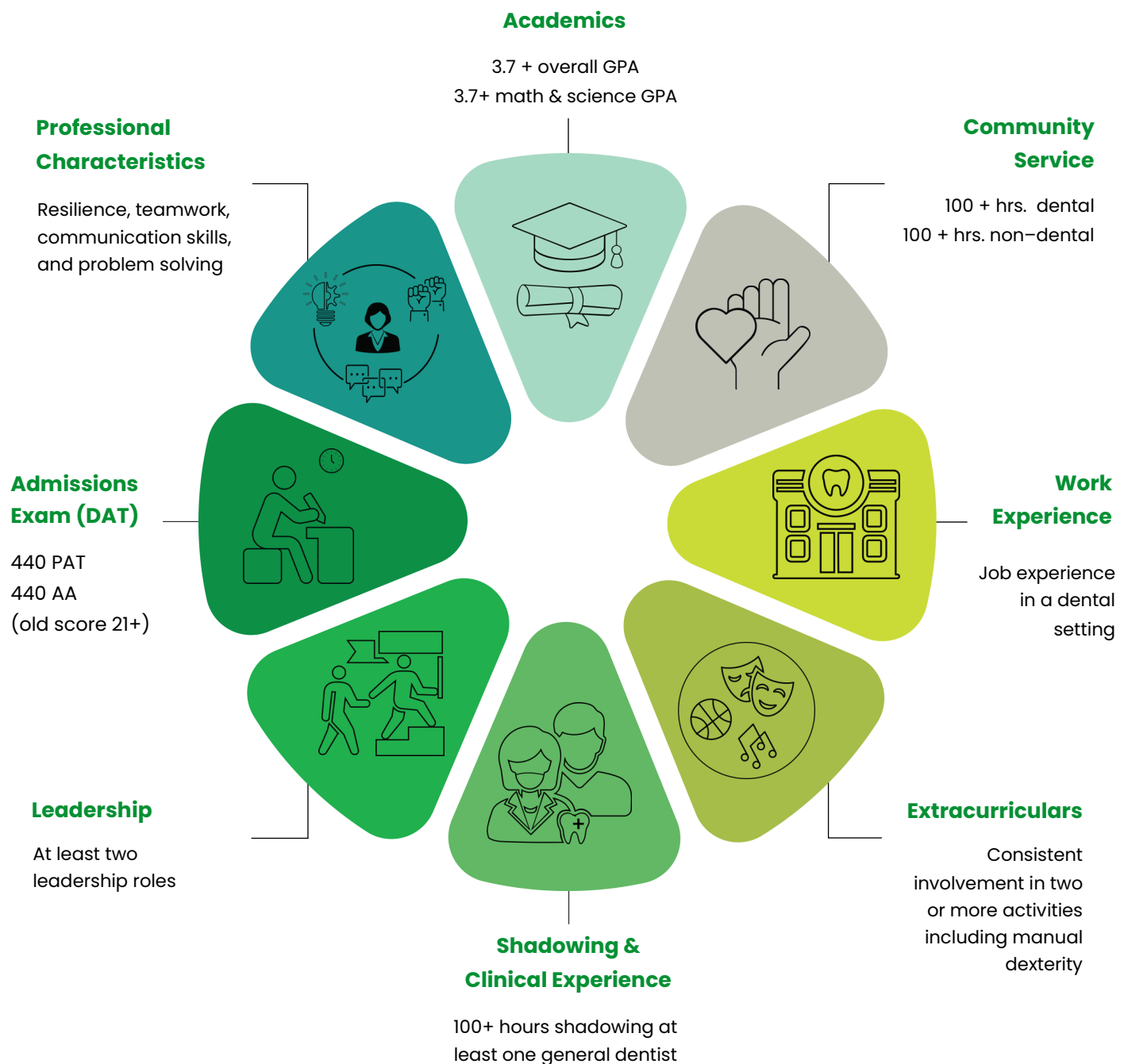


Dental School Competitive Application

What is the holistic candidate review?

Texas dental schools use a “holistic candidate review” to gauge a candidate’s qualifications to enter a Doctor of Dental Surgery program. This review looks at the candidate in totality, taking into consideration quality experiences that prepare them for the dental profession. The wheel below represents our recommendations for competitive application.



Progress Tracking

Name: _____

Evaluation Criteria:

1 - Fails to Meet Expectations; 2 - Falls Short of Expectations; 3 - Meets Expectations; 4 - Exceeds Expectations; 5 - Outperforms Expectations

ACTIVITIES	1	2	3	4	5
Clinical Hours	<div></div>	<div></div>	<div></div>	<div></div>	<div></div>
Extracurriculars	<div></div>	<div></div>	<div></div>	<div></div>	<div></div>
GPA	<div></div>	<div></div>	<div></div>	<div></div>	<div></div>
Leadership	<div></div>	<div></div>	<div></div>	<div></div>	<div></div>
Professional Characteristics	<div></div>	<div></div>	<div></div>	<div></div>	<div></div>
Research	<div></div>	<div></div>	<div></div>	<div></div>	<div></div>
Shadowing & Clinical Experience	<div></div>	<div></div>	<div></div>	<div></div>	<div></div>
Volunteering	<div></div>	<div></div>	<div></div>	<div></div>	<div></div>

Comments/Suggestions: