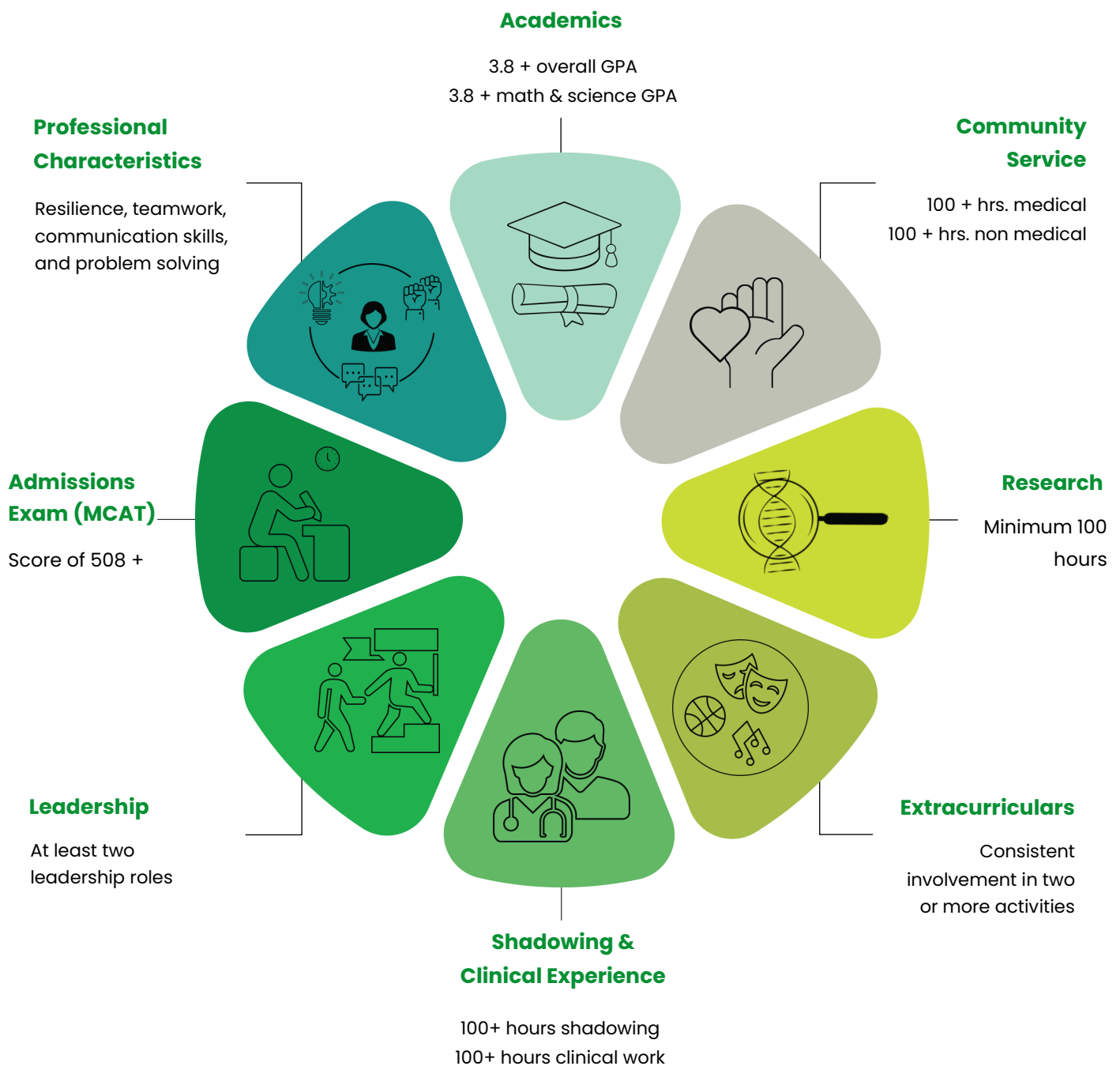


Medical School Competitive Application

What is the holistic candidate review?

Texas medical schools use a “holistic candidate review” process to gauge a candidate’s qualifications to attend an *M.D. (allopathic)* or *D.O. (osteopathic)* medical school. This review looks at the candidate in totality, taking into consideration quality experiences that prepare them for the medical field. The wheel below represents our recommendations for a competitive application.



Progress Tracking

Name: _____

Evaluation Criteria:

1 - Fails to Meet Expectations; 2 - Falls Short of Expectations; 3 - Meets Expectations; 4 - Exceeds Expectations; 5 - Outperforms Expectations

ACTIVITIES	1	2	3	4	5
Clinical Hours	<div></div>	<div></div>	<div></div>	<div></div>	<div></div>
Extracurriculars	<div></div>	<div></div>	<div></div>	<div></div>	<div></div>
GPA	<div></div>	<div></div>	<div></div>	<div></div>	<div></div>
Leadership	<div></div>	<div></div>	<div></div>	<div></div>	<div></div>
Professional Characteristics	<div></div>	<div></div>	<div></div>	<div></div>	<div></div>
Research	<div></div>	<div></div>	<div></div>	<div></div>	<div></div>
Shadowing	<div></div>	<div></div>	<div></div>	<div></div>	<div></div>
Volunteering	<div></div>	<div></div>	<div></div>	<div></div>	<div></div>

Comments/Suggestions: